

# Interaction layer - Data, Interactions and smarter Decisions



## Problem

Data is the new oil and the modern-day supply chains are the oil reserves (big data). However, the real value of data lies in the ease of interaction to extract (push or pull) actionable insights from this data. Insights that help enterprises make agile and accurate decisions with speed across supply chain processes.

With the increasing data pool, traditional analytics methods are no longer feasible. The problem lies in the latency in assessing (interacting) real-time information to garner actionable insights. This latency is what keeps planning away from real-time agility.

## Solution

The Interaction layer is built over the Analytics layer and offers real-time, personalised interaction with the platform. It bridges the gap between real-time data and decisions based on them. This layer can help you with:



**Configuring alerts for critical business KPIs**



**Access management**



**Ask intelligent queries regarding your processes**



**Collaborative decision making**

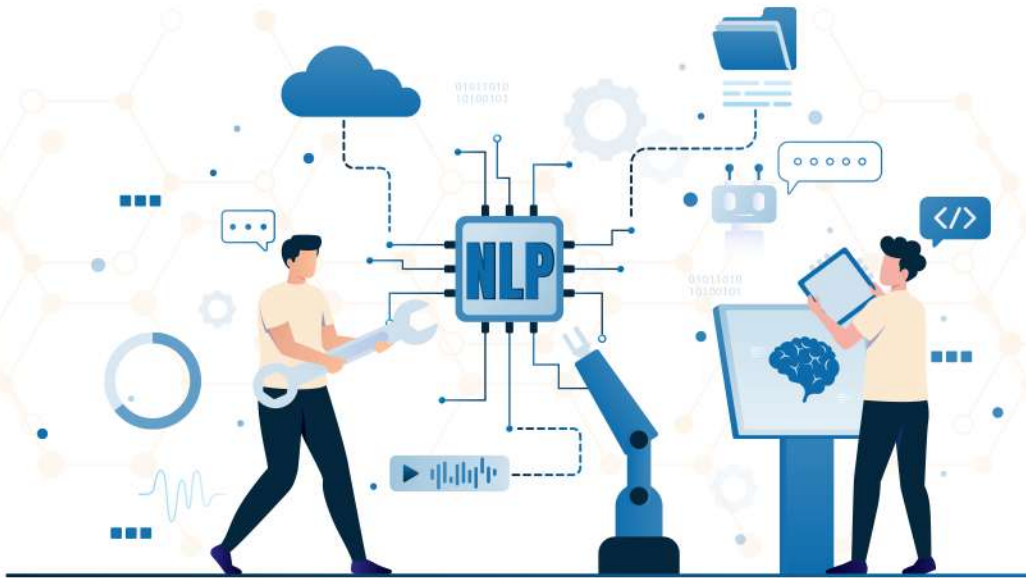


**Upload your business process data files**

## Interacting with VERDIS to extract 'Insights' from 'Data'

### 1. Natural Language Processing (NLP) Offerings

Rather than going through multiple reports or analysing the dashboards, users can directly ask the intelligent platform the most relevant queries and get real-time answers for analysis. NLP further enables the following capabilities:



#### MCHAT

Mchat feature is a way for humans to interact with technology and seek answers to their supply chain queries, across processes on the go. The NLP ensures that VERDIS understands your query and the data context of your requirement.

Mchat is integrated with different data sources, is user-friendly, and is quick in answering. It can be used in boardroom meetings to ask any query, analyse the data points and make smarter data-driven decisions.

#### E-Mail

The Email feature allows users to send and request VERDIS answers to process-related queries with contextual insights. Our platform intelligently handles and replies to the user query in the most appropriate format possible. The standard format could be of two types:

- Charts
- Single Value

#### WhatsApp

Whatsapp feature allows the user to ask supply chain related queries on WhatsApp and get alerts and notifications over it.



## 2. File Uploading

This feature lets you upload master and operational files that are made manually, allowing the platform's intelligence to interpret business data and simulate plans accordingly. The user can further benchmark plans and use them for comparison.

## 3. Access Management

Access management offers three key capabilities:  
IT Administration, Business Administration, & Usage Report

### **IT Administration:**

This is an interactive role (human that helps with Access Management) that looks over the departmental access. They can create/edit/delete/update new or existing users on the platform. They can assign the access to specific modules to new/existing users. The IT Admin can even activate/suspend the user license as per the business requirements.

### **Business Administration:**

Business administration is responsible for managing the access at the business (data) level. They can edit/create/delete data wise-module wise user login, as per the business requirements.

### **Usage Report**

The usage report gives you an overview of VERDIS usage analytics at the organisation level. You can track down the usage across departments and users and improve organisation-wide adoption.

## 4. Collaborative Decisioning

A decision playbook can be used to discuss any variance or plan in sales, where users can share different files/photos, assign different tasks regarding the topic, and check the progress as per the agreed user consensus.

To know more :  
<https://www.verdis.ai/> >>

Ask for a Demo :  
[teamverdis@verdis.ai](mailto:teamverdis@verdis.ai) >>

